



# Spirit of Faith

*Pastor Jim Deal*  
*Faith Presbyterian Church*  
*Of East Wenatchee*  
*May 2024 News Letter*

....to inspire and challenge believers to seek deeper ways of serving Our Lord, to motivate all people to follow Jesus Christ, and to nurture one another.

## **Redemption from being overwhelmed**

*Do not fear, for I have redeemed you;*

*I have called you by name, you are mine.*

<sup>2</sup> *When you pass through the waters, I will be with you;  
and through the rivers, they shall not overwhelm you;  
when you walk through fire you shall not be burned,  
and the flame shall not consume you.*

<sup>3</sup> *For I am the Lord your God,  
the Holy One of Israel, your Savior.*

Isaiah 43: 1-3

Tall Timber and our church have a deep and rich intertwined history. Yet this Presbyterian camp near Lake Wenatchee is going through deep waters presently, which threaten to overwhelm it. Therefore, I want to write you about how our church might help the camp in its hour of need.

These verses from the prophet Isaiah offers us hope that our beloved camp will make it through the present difficulties, and delivered into a time of healthy, flourishing ministry.

As you may know, the camp sits at the confluence of the Napeequa and White Rivers, and is bounded by wilderness. More than sixty years ago, the camp was founded by three pastors. One of those pastors was Rev. Herb Schulze, founding pastor of our church, then known as Eastmont Presbyterian Church.

Over the years, we have been involved with the camp in a variety of ways, sending up campers and counselors in the summer, having guest groups from the church up for a winter weekend, offering a church family camp in the summer or early fall, as well as pastors and elders serving on the camp board.

The Schulze Center at the camp was built by volunteers from this church, and dedicated in the early 1980's. Many in our church have fond memories of that major mission effort by our church.

*continued to the next page*

With the camp going through a difficult time of transition, Tall Timber is presently in need of our help. One of the ways we could aid the camp is by renovating and improving the Schulze Center. Especially since this building is named after the founding pastor of our church, it seems appropriate for us to aid the camp in this way. Our individual church might not be able to do it alone, but we can certainly help.

Therefore, we will be receiving a special offering for Tall Timber on Sunday, May 19<sup>th</sup>, the Day of Pentecost. Please give generously. There may be additional ways we can help with the renovation in the future, including through volunteering our labor for some parts of this project.

Lifting up Tall Timber in our prayers is always helpful, and needed. We trust that God will see the camp through the deep waters it is passing through right now. They will not overwhelm the camp, for nothing is impossible with God, our Savior, and our Redeemer.

Becky Fishburn, former director of the camp along with her husband Stan, put it this way: "Tall Timber remains a place of incredible beauty and serenity so needed in our lives, and we are hopeful for a bright future of service and ministry." Amen!

Faithfully yours,

Pastor Jim



<i>Angela Dial</i>	<i>May 01</i>
<i>Kris Kruse</i>	<i>May 02</i>
<i>Cleo Lyons</i>	<i>May 02</i>
<i>Ann Deal</i>	<i>May 05</i>
<i>Dee Clark</i>	<i>May 15</i>
<i>Patty Rush</i>	<i>May 21</i>
<i>Sue Berry</i>	<i>May 25</i>
<i>Jan Smith</i>	<i>May 30</i>



<i>Robert and Cassidy Lewis.</i>	<i>May 20</i>
<i>Randy &amp; Sheila Calihan</i>	<i>May 20</i>
<i>Thomas and Christina Weldy</i>	<i>May 21</i>
<i>Ken &amp; Jan Smith</i>	<i>May 29</i>

*Happy Anniversary*

# Tall Timber Summer Plans for 2024

With great regret, Tall Timber is cancelling all camps other than Memorial Work Weekend for the 2024 summer season. However, the camp is open for guest groups. Therefore, please do contact the camp if you have a group who would like to stay at Tall Timber this summer. If we have room, we will make it work!

The decision to cancel all but one summer camp was not made lightly, or eagerly by the Board of Directors of the Camp. However, it is Tall Timber's desire to offer a strong, Christ-centered summer program, in line with our mission statement. Unfortunately, we are simply not able to offer a quality program in the summer of 2024. This is due to a number of factors, including resignations of key staff. We do hope to return to a full summer camping program for all ages in 2025.

We realize this is not good news for those who had already registered for summer camps. We will return camp fees in full to those already registered.

The board is in the process of securing new leadership for the camp, and is actively interviewing candidates. In the meantime, Stan and Becky Fishburn, Directors Emeritus of the camp, are helping us out in the month of May. The board is extremely grateful for their wise and seasoned leadership.

On the positive side, the existing staff and board hope to catch up on some long-needed repair and improvement of our facilities during this "guest group summer." If you have construction skills which could help, we want to hear from you! Volunteers are also needed in the areas of kitchen help and housekeeping. We love volunteers at camp!

Please do keep the board, remaining staff, supporters, and donors in your prayers as we work through this difficult transition. Your understanding and support would be greatly appreciated. Tall Timber remains a place of incredible beauty and serenity so needed in our lives, and we are hopeful for a bright future of service and ministry.

Sincerely,

Rev. Jim Deal

Chair of the Board of Directors

# Property Ministry Team Report

Things are happening underground and behind closed doors! No, we are not trying to keep any secrets, but that's where the action is!

1) The automatic irrigation system is nearly complete for our Patio of Praise, so we can keep our beautiful flower beds watered this spring and summer without having to do it by hand. We are still exploring options for shade structures for the patio as well.

2) We have secured a contractor to install our long-awaited new exterior doors; hopefully that will begin happening soon. They will tackle one door at a time, as their schedule allows.

3) Acoustical panels are being constructed for the fellowship hall to cut down on the ambient noise level and sound reflection that makes it difficult to hear for some.

4) We are in the process of funding the remote video monitors that are to be placed in the fellowship hall, kitchen, nursery, and conference room. These will primarily be there to pick up the livestream broadcast during services, but they can also be used for playing videos when desired. The total cost for the monitors is estimated to be about \$3,000. Special donations for this need are appreciated.

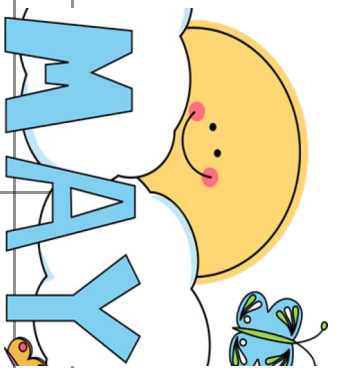
5) Soon we will begin to construct three storage closets to house our Patio sound equipment and landscape supplies, and also a new IT closet for our networking equipment.

6) Session recently determined that a security camera system, which was previously discussed but never funded, should now be a top priority. These cameras will primarily be on the outside of the building, keeping eye on the building perimeter, entry points, and also the parking lot. Additional cameras will be installed on the storage building to keep tabs on what's happening down below. There will be just three cameras placed indoors, monitoring the sanctuary, foyer, and main office.

As has been said before, your Property Ministry Team is diligently monitoring these and other potential projects as we aim to be good stewards of the generous contributions that you continue to faithfully give. In the last 20+ years we have done many projects to help bring this grand 1950s era building into the 21<sup>st</sup> century; functionality always being the driving factor, with aesthetics coming in a close second.

We look forward to worshipping outdoors again soon!

Ron Lodge



2024

5	Cinco de Mayo 10:am Worship 11:15 Fellowship	6	Office Closed	7	Office Closed 1:30 pm Board of Deacons	8	9:30 a Women's Bible Study 7-9 Iglesia de Dios Del Septima Dia	9	Office Closed	10	10:30 Office is open	11	10am to 5pm Iglesia de Dios Del Septima Dia
12	Mother's Day 10am Worship Service 11:15 Fellowship	13	Office Closed	14	Office Closed	15	9:30 a Women's Bible Study 7-9 Iglesia de Dios Del Septima Dia	16	Office Closed 2:00 pm Mission Team	17	10:30 Office is open 5-9pm Ginko Mineral Society 7:00 pm Applearies Concert @ Grace Lutheran Church	18	10am to 5pm Iglesia de Dios Del Septima Dia
19	Day of Pentecost 10am Worship Service w/ Communion Sunday 11:15 Fellowship	20	Office Closed	21	Office Closed	22	9:30 a Women's Bible Study 7-9 Iglesia de Dios Del Septima Dia	23	Office Closed 6pm Session Meeting	24	10:30 Office is open Tall Timber Work Week- end May 24th-27th	25	10am to 5pm Iglesia de Dios Del Septima Dia
26	10am Worship Service w/ 11:15 Fellowship	27	Memorial Day Office Closed	28	Office Closed	29	9:30 a Women's Bible Study 7-9 Iglesia de Dios Del Septima Dia	30	Office Closed	31	10:30 Office is open		